

Jeff Mason

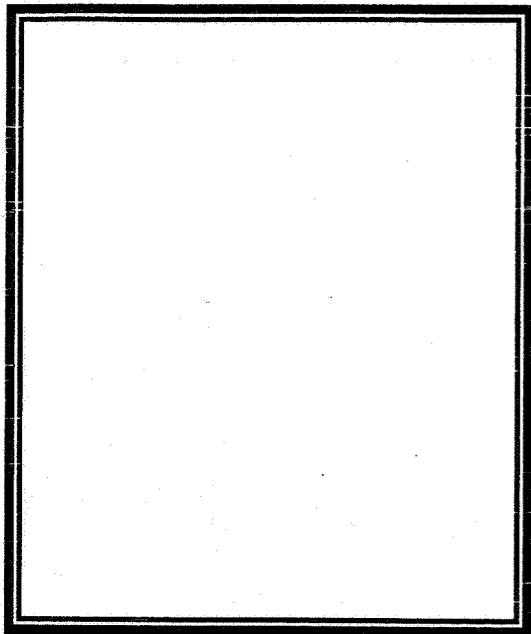
From: powersurplus@talktalk.net
Sent: 21 October 2009 11:33
To: Jeff Mason
Cc: Vicki Elger
Subject: licensable area

Hello jeff,

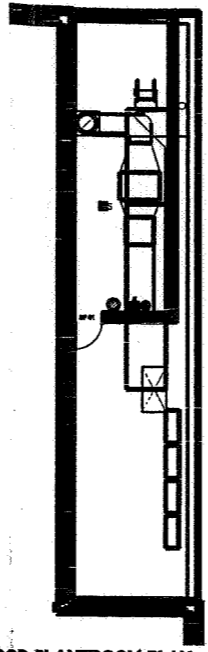
Just to confirm on the plan for unit 6 the plaza stevenage : the shaded in area IS THE LICENSABLE AREA FOR ALL LICENSABLE ACTIVITIES.

Thanks jeremy dickens

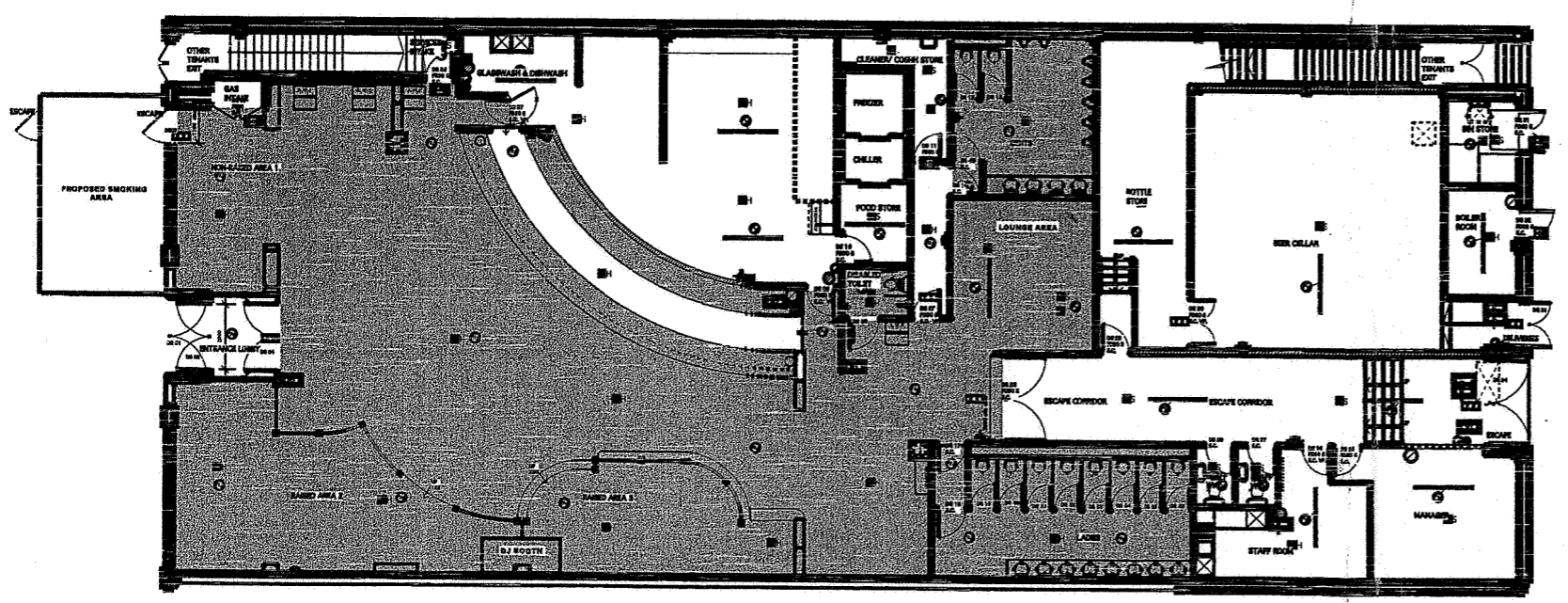
21/10/09



BLOCK PLAN (1:1250)



FIRST FLOOR PLANTROOM PLAN



GROUND FLOOR PLAN

LICENSING NOTES

FIRE ALARM
 AN AUTOMATIC FIRE ALARM INSTALLATION WILL BE INSTALLED TO COMPLY WITH THE REQUIREMENTS OF BS 5839 (PART 1). THE INSTALLATION WILL CONSIST OF A MINIMUM OF TWO BREAK-GLASS UNITS LOCATED BEHIND THE BAR AT GROUND FLOOR, ALL WIRED IN MCCC CABLE, SOUNDER POINTS POSITIONED TO ACHIEVE THE AUDIBILITY REQUIRED BY THE BRITISH STANDARD. SEE PLANS FOR POSITIONS OF BREAK GLASS UNITS.

FIRE DOORS
 ALL DOORS INDICATED AS FIRE RESISTING ARE TO BE SOLID CORE SELF CLOSING FLUSH DOORS TYPE FD30S OR FD60S AS MARKED ON THE DRAWINGS. ALL TO COMPLY WITH BS 476 PART 22 SET IN A REBATED FRAME WITH INTUMESCENT STRIPS.

WHEN PLANTED-ON REBATE BEADS ARE TO BE USED, THEY WILL BE SCREW FIXED AT 300MM CENTRES AND GLUED.

ALL FIRE DOORS WILL HAVE A SIGN FIXED TO BOTH SIDES BEARING THE WORDS "FIRE DOOR KEEP SHUT".

ALL FIRE DOORS WILL BE SOLID, WITHOUT GLAZED PANELS EXCEPT WHERE VISION PANELS ARE REQUIRED BY THE FIRE OFFICER IN WHICH CASE THEY WILL HAVE VISION PANELS IN ACCORDANCE WITH BS 476.

GLAZED IN GW SAFETY GLASS 6MM THICK, SET IN 25MM REBATES AND GLAZING BEADS.

FIRE FIGHTING EQUIPMENT
 FIRE FIGHTING EQUIPMENT WILL BE INSTALLED OF TYPES AND IN LOCATIONS AS REQUESTED IN THE LOCAL FIRE OFFICER'S REPORT.

ALL EQUIPMENT WILL BE TO BS 5423 AND WILL BE MAINTAINED AS REQUESTED IN BS 5306 PART 3, 1985.

ALL FIRE RELATED SIGNS AND NOTICES ARE TO COMPLY WITH BS 5499 PART 1.

VENTILATION
 FOOD PREP AREAS : 40 AIR CHANGES PER HOUR SUPPLY 85% OF EXTRACT.
 TOILETS (INCLUDING VENTILATED LOBBIES) : 10 AIR CHANGES PER HOUR.
 PUBLIC AREAS : 12 AIR CHANGES PER HOUR
 DISABLED TOILET & STAFF TOILETS : MIN 3 AIR CHANGES PER HOUR.
 STAFFROOM MIN 60L/S.
 GLASS WASH : 15 AIR CHANGES PER HOUR.
 ACCESS FOR DISABLED PERSONS.

THE MAIN FRONT DOOR IS DESIGNED TO AFFORD LEVEL WHEELCHAIR ACCESS AND ACCESS FOR THE DISABLED IS AVAILABLE TO THE BAR AND MOST PARTS OF THE PREMISES.

A DISABLED PERSONS' TOILET, WITH 'RADAR' LOCK, IS PROVIDED AND EQUIPPED TO THE REQUIREMENTS OF PART M OF THE BUILDING REGULATIONS.

EMERGENCY EXIT ROUTES & DOORS
 ALL EMERGENCY EXIT ROUTES AND DOORS WILL BE OF A WIDTH SUITABLE FOR THE AGREED OCCUPANCY NUMBERS. ROUTES WILL BE KEPT CLEAR OF OBSTRUCTION, AND FURNITURE AND EQUIPMENT WILL BE POSITIONED ACCORDINGLY.

EXIT DOORS WILL BE FITTED WITH PUSH-BAR PANIC BOLT (IRONMONGERY) AND A SIGN MOUNTED TO PANIC RELEASE AT EYE LEVEL SAYING "PUSH BAR TO OPEN".

ALL EMERGENCY EXIT DOORS WILL OPEN OUTWARDS AND WHERE APPROPRIATE WILL BE POSITIONED WITHIN THE BUILDING SO AS NOT TO OPEN ACROSS A PAVEMENT. EXTERNAL FRONT ENTRANCE DOORS WHICH OPEN INWARDS WILL BE SECURED OPEN WHILE THE PUBLIC ARE ON THE PREMISES.

NOSINGS OF ANY STEPS AND THE EDGES OF ANY LANDINGS ARE TO BE MADE CONSPICUOUS BY WHITE PAINTING OR OTHER EFFECTIVE MEANS, INCLUDING APPROPRIATE NOSINGS.

COMPARTMENTATION
 ALL WALLS FORMING ROOMS SUCH AS FOOD PREP, STAFF LOBBIES ETC WILL BE TAKEN UP TO THE UNDERSIDE OF THE STRUCTURAL SOFFIT TO FORM ONE-CUR FIRE RESISTANT COMPARTMENT WALLS. ANY VOIDS WILL BE PACKED WITH NON-COMBUSTIBLE MATERIAL.

EMERGENCY LIGHTING AND POWER
 ALL EMERGENCY LIGHTING SHALL BE FULLY MAINTAINED DESIGNED TO ACHIEVE 2 LUX ILLUMINATION AND LINKED TO THE BAR BY A 4 POLE SWITCH.

ALL ELECTRICAL WIRING APART FROM THE FIRE ALARM INSTALLATION WILL BE CARRIED OUT IN A WIRING SYSTEM TO THE REQUIREMENTS OF THE FIRE AND LOCAL AUTHORITIES AND WILL BE INSTALLED TO MEET THE LATEST IEE REGULATIONS AND TO COMPLY WITH THE REQUIREMENTS SET OUT IN BS 5266.

WHERE SOCKET OUTLETS IN THE PUBLIC AREA ARE FOR MUSICAL EQUIPMENT OR SOUND/LIGHT EQUIPMENT THEY ARE TO BE PROTECTED BY RCD'S TO BS 4293, HAVING A RATED TRIPPING CURRENT NOT EXCEEDING 30 MILLIAMPS.

GLAZING & SAFETY GLAZING
 ALL GLASS WILL BE IN ACCORDANCE WITH THE REQUIREMENTS OF THE BUILDING REGULATIONS PART N.

KEY FOR SYMBOLS

● BREAK GLASS FIRE ALARM POINT	● EMERGENCY GLAZING LINKED TO HULL CHORD IN DISABLED TOILET. NOTE UNIT IS ALSO TO HAVE A PLANNING INDOOR LIGHT.
● FIRE ALARM BOUNDARY	● EMERGENCY FULL CHORD IN DISABLED
● 8 LITRE WATER FIRE EXTINGUISHER	● "PUSH" FIRE ALARM BOUNDARY TO DFC.
● DRY POWDER FIRE EXTINGUISHER	● ILLUMINATED SINGLE HEAD EXIT SIGNS CERTIFIED TO BS 4833 AND ISL 1001 TO COMPLY WITH BS DIRECTIVE 92/92 AND BS 5498.
● FIRE ALARM	● ILLUMINATED DOUBLE HEAD EXIT SIGNS CERTIFIED TO BS 4833 AND ISL 1001 TO COMPLY WITH BS DIRECTIVE 92/92 AND BS 5498.
● CARBON DIOXIDE FIRE EXTINGUISHER	
● FOAM FIRE EXTINGUISHER	
● HEAT DETECTOR	
● SMOKE DETECTOR	

FIRE NOTICES

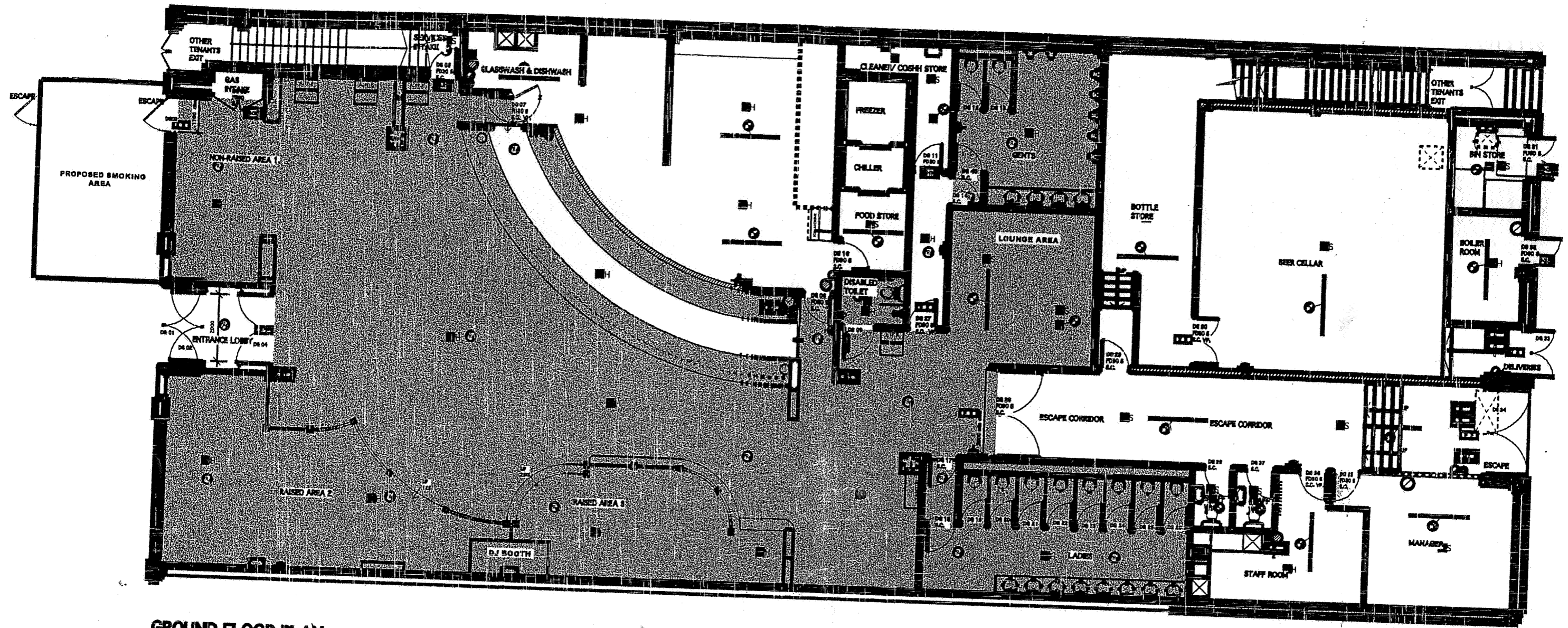
NOTE: ALL FIRE RESISTANT DOORS TO HAVE NOTICE "FIRE DOOR KEEP SHUT" TO BOTH SIDES EXCEPT WHERE INDICATED AS NO.

● EMERGENCY SELF CONTAINED LUMINAIRE BRACKET MOUNTED EXTERIOR WALL AS PER DETAILS. 3 HOUR DURATION TYP. 455 AND ISL 1001	● STAFF FIRE PROCEDURE NOTICE.
● EMERGENCY GLO CONTAINED LUMINAIRE BRACKET MOUNTED, AS PER DETAILS & COLLOR. ONLY. 3 HOUR DURATION TYP. 4553 AND ISL 1001	● FIRE EXTINGUISHER (ON DOORS)
● EMERGENCY SELF CONTAINED LUMINAIRE RECESSED TYPE, AS PER VERBALLY, WHITE TYP. PERK. 3 HOUR DURATION TO BS 4833 AND ISL 1001	● FIRE EXIT KEEP CLEAR (ON DOORS, STAIRS)
● SIGNS ATTACHED TO LIGHT FITTING, THE SIGNS ARE THAT FITTING IS EMERGENCY LIGHT AS ABOVE.	● PUSH BAR TO OPEN.

Under the BIAT Conditions of Engagement the copyright in all drawings specifications and documents prepared by the Designer and in the work executed from them shall remain the property of the Designer unless otherwise agreed. Do not scale from the drawing. Work to figured dimensions. Check all dimensions on site. In the event of any discrepancy, refer to the Designer.

J'S BAR & LOUNGE
UNIT 6, THE PLAZA, STEVENAGE
PROPOSED LICENSING PLANS

GROUND FLOOR PLAN



ALL FIRE RELATED
SIGNS AND NOTICES ARE TO COMPLY WITH BS 5499 PART 1.

VENTILATION

FOOD PREP AREAS : 40 AIR CHANGES PER HOUR SUPPLY 85% OF EXTRACT.
TOILETS. (INCLUDING VENTILATED LOBBIES) : 10 AIR CHANGES PER HOUR.
PUBLIC AREAS : 12 AIR CHANGES PER HOUR
DISABLED TOILET & STAFF TOILETS : MIN 3 AIR CHANGES PER HOUR.
STAFFROOM MIN 60L/S.
GLASS WASH : 15 AIR CHANGES PER HOUR.
ACCESS FOR DISABLED PERSONS.

THE MAIN FRONT DOOR IS DESIGNED TO AFFORD LEVEL WHEELCHAIR ACCESS AND ACCESS FOR THE DISABLED IS AVAILABLE TO THE BAR AND MOST PARTS OF THE PREMISES.
A DISABLED PERSONS' TOILET, WITH 'RADAR' LOCK, IS PROVIDED AND EQUIPPED TO THE REQUIREMENTS OF PART M OF THE BUILDING REGULATIONS.

EMERGENCY EXIT ROUTES & DOORS:

ALL EMERGENCY EXIT ROUTES AND DOORS WILL BE OF A WIDTH SUITABLE FOR THE AGREED OCCUPANCY NUMBERS. ROUTES WILL BE KEPT CLEAR OF OBSTRUCTION, AND FURNITURE AND EQUIPMENT WILL BE POSITIONED ACCORDINGLY.
EXIT DOORS WILL BE FITTED WITH PUSH-BAR PANIC BOLT IRONMONGERY AND A SIGN MOUNTED TO PANIC RELEASE AT EYE LEVEL SAYING "PUSH BAR TO OPEN".
ALL EMERGENCY EXIT DOORS WILL OPEN OUTWARDS AND WHERE APPROPRIATE WILL BE POSITIONED WITHIN THE BUILDING SO AS NOT TO OPEN ACROSS A PAVEMENT. EXTERNAL FRONT ENTRANCE DOORS WHICH OPEN INWARDS WILL BE SECURED OPEN WHILE THE PUBLIC ARE ON THE PREMISES. NOSINGS OF ANY STEPS AND THE EDGES OF ANY LANDINGS ARE TO BE MADE CONSPICUOUS BY WHITE PAINTING OR OTHER EFFECTIVE MEANS, INCLUDING APPROPRIATE NOSINGS.

COMPARTMENTATION:

ALL WALLS FORMING ROOMS SUCH AS FOOD PREP, STAIR LOBBIES ETC WILL BE TAKEN UP TO THE UNDERSIDE OF THE STRUCTURAL SOFFIT TO FORM ONE-OUR FIRE RESISTANT COMPARTMENT WALLS. ANY VOIDS WILL BE PACKED WITH NON-COMBUSTIBLE MATERIAL.

EMERGENCY LIGHTING AND POWER

ALL EMERGENCY LIGHTING SHALL BE FULLY MAINTAINED DESIGNED TO ACHIEVE 2 LUX. ILLUMINATION AND LINKED TO THE BAR BY A 4 POLE SWITCH.

ALL ELECTRICAL WIRING APART FROM THE FIRE ALARM INSTALLATION WILL BE CARRIED OUT IN A WIRING SYSTEM TO THE REQUIREMENTS OF THE FIRE AND LOCAL AUTHORITIES AND WILL BE INSTALLED TO MEET THE LATEST IEE REGULATIONS AND TO COMPLY WITH THE REQUIREMENTS SET OUT IN BS 5266.
WHERE SOCKET OUTLETS IN THE PUBLIC AREA ARE FOR MUSICAL EQUIPMENT OR SOUND/LIGHT EQUIPMENT THEY ARE TO BE PROTECTED BY RCD'S TO BS 4293, HAVING A RATED TRIPPING CURRENT NOT EXCEEDING 30 MILLIAMPS.

GLAZING & SAFETY GLAZING

ALL GLASS WILL BE IN ACCORDANCE WITH THE REQUIREMENTS OF THE BUILDING REGULATIONS PART N.

KEY FOR SYMBOLS

●	BROOK GLASS FIRE ALARM POINT	●	EMERGENCY BUZZER LINKED TO FULL CHORD IN DISABLED TOILET. NOTE UNIT IS ALSO TO HAVE A FLASHING RECEPTOR LIGHT.
■	VISUAL FIRE WARNING DEVICE	●	EMERGENCY FULL CHORD IN DISABLED TOILET
■	FIRE ALARM SOUNDER	■	"PERSON" FIRE ALARM BEACON TO DPT.
○	9 LITRE WATER FIRE EXTINGUISHER	■	ILLUMINATED SINGLE SPOD EXIT SIGNS CENTERED TO BS 4833 AND ICEL 1001 TO CONFORM WITH BS DIRECTIVE 92/28 AND BS 5499. AS THORN SIGNALS TO PUBLIC AREAS THORN SIGNALS TO NON PUBLIC AREAS ALL WITH MAINTAINED SUPPLY
○	DRY POWDER FIRE EXTINGUISHER	■	ILLUMINATED DOUBLE SPOD EXIT SIGNS CENTERED TO BS 4833 AND ICEL 1001 TO CONFORM WITH BS DIRECTIVE 92/28 AND BS 5499.
■	FIRE BLANKET		
○	CARBON DIOXIDE FIRE EXTINGUISHER		
○	FOAM FIRE EXTINGUISHER		
○	HEAT DETECTOR		
○	SMOKE DETECTOR		
○	EMERGENCY SELF CONTAINED LIGHTS		
○	BLINDFACE MOUNTED EXTINGUISHER AS PER ZETAULTE, 3 HOUR DURATION		
○	TORS 4533 AND ICEL 1001		
○	EMERGENCY SELF CONTAINED LIGHTS		
○	BLINDFACE MOUNTED, AS PER DELTA 1 & COLONY, 3 HOUR DURATION TORS 4533 AND ICEL 1001		
○	EMERGENCY SELF CONTAINED LIGHTS		
○	RECESSED TYPE, AS PER VERBAULIX WHITE TORN FINISH, 3 HOUR DURATION TO BS 4533 AND ICEL 1001		
○	WHERE ATTACHED TO LIGHT FITTING, THIS SYMBOLS THAT FITTING IS EMERGENCY LIGHT AS ABOVE.		

FIRE NOTICES

NOTE: ALL FIRE RESISTANT DOORS TO HAVE NOTICE
= FIRE DOOR KEEP SHUT TO BOTH SIDES
EXCEPT WHERE INDICATED AS NS.

GENERAL FIRE PROCEDURE NOTICE
STAFF FIRE PROCEDURE NOTICE
KEEP LOCKED SHUT (ON DOORS)
FIRE EXIT KEEP CLEAR (ON DOORS, STAIRS)
PUSH BAR TO OPEN.

Under the BIAT Conditions of Engagement the copyright in all drawings specifications and documents prepared by the Designer and in the work executed from them shall remain the property of the Designer unless otherwise agreed. Do not scale from the drawing. Work to figured dimensions. Check all dimensions on site. In the event of any discrepancy, refer to the Designer.

J'S BAR & LOUNGE
UNIT 6, THE PLAZA, STEVENAGE